



From Janet's Desk

It was great to see so many of you at our September meeting! We welcomed some new and returning members and enjoyed a highly stimulating and well-received program on the Chopin Preludes, presented by Dr. Douglas Weeks. Thank you to our President Elect and Programs chair, Cathy Thacker, for securing our clinician. No handouts were given, but many took notes and would probably be happy to share Dr. Weeks interesting thesis with those who could not attend.

Bonnie Bowen, our membership chair, has paired up new members with mentors, but we would all like to help as our newest become accustomed to our events and procedures. Newcomers, feel free to contact any of our officers or chairmen if you have questions.

Lisa Gaal did a great job providing the new GCMTA Directory Supplement which she passed out at the meeting. Any who did not pick this up at the September meeting can obtain one by sending \$5 to Lisa Gaal at 1535 Shagbark Way, Cumming, GA 30041.

Thank you to Rebecca McKeown and Eunju Park for coordinating and serving refreshments at our meeting and to Music & Arts for providing them. They are faithful in doing this for us each month and we do appreciate them. Also, Mary Marshall Dekkers has been so helpful in providing name tags for us, our new members and visitors. Please remember to wear yours at meetings to help newcomers get acquainted, and then leave them afterwards. Also, thanks for tucking your cord inside the pocket to make organization and storage easier.



October Meeting

Our October 28th meeting at Piano Works is an excellent opportunity to learn all about our spring Ensemble Concert. All the selections will be showcased for your consideration and CDs made by Tim Wheeler for each participating teacher to use in preparing students for the event. Changes in rehearsal procedures should make participation easier than ever for parents and students. This is a chance to include even first year students in a gala performance setting. If you haven't participated with your students in Ensemble in the past, let me encourage you to explore the possibility by coming to our Oct. meeting. Some students absolutely love participating in this concert

even when they do not want to enter any other festivals. It's very different and definitely a lower stress situation. Quite a few teachers are preparing the Ensemble Concert Repertoire to present to you. They deserve a great audience! Our business meeting will occur, as usual, and you don't want to miss out. Also, if you aren't familiar with the Piano Works store in Buford, its a fabulous free recital venue for your consideration. They have an excellent selection of music for your perusal and offer a 20% discount to teachers. Hope to see you Oct. 28th at 9:30!!



Inside this issue:

2009 State Conference	2
GCMTA Fall Festival	2
Musikgarten Workshop	2
Placement News, AMF, Pedagogy Symposium	3
Ensemble Information	4
Website, Newsletter, Odds & Ends	5
GCMTA Conference Registration Form	6

Theory Test Notes

Each month there will be little "nuggets" regarding the upcoming Theory Test given on March 6, 2010.

- * Did you know? There are five levels of the test. Level 1 is the easiest; Level 5 is the most difficult.
- * Did you know a student may choose a single clef for the entire test?
- * Did you know that Level one is more accessible for non-pianists?

Stay tuned, there will be more "nuggets" next month!



2009 State Conference - Shorter College

This year's GMTA Conference will be held in Rome. GMTA is delighted and honored to welcome concert artist, David Northington. His all Copland concert will be given Fri., Nov. 6 at 8 pm. Additionally, the conference will feature presentations from "Georgia's Own" gifted teachers and scholars, one of which is our GCMTA Certification Chair, Robin Engleman. Her offering, along with Jan Adams and a former GCMTA President, Yumi Patterson, is on the old and new faces of certification (2:10 - 2:50, Fri., Nov. 6).

Other headliners include Dr. Scott McBride Smith who is the featured pedagogy specialist, Sorrell Hayes, whose commissioned work will be heard at 8pm on Thurs., and mezzo-soprano Penelope Bitzas as the NATS guest clinician, with a master class at 1 pm Friday.

Our own award winning students in performance, an opera, theater music for our banquet and other vocal and piano features are included this year. New Orleans author, Craig Cortello will open the conference with his experiences in the business world as presented in his latest book, **EVERYTHING WE NEEDED TO KNOW ABOUT BUSINESS, WE LEARNED PLAYING MUSIC**, released in Sept. His book features interviews with 32 business leaders who played music as children and view that experience as a defining one in preparing them for success. Fascinating concept! With 26 performers and presenters scheduled, there will certainly be something for everyone! See the GMTA website (www.georgiamta.org/name:georgia, password: music) for a complete schedule and lodging info. A registration form is included in this newsletter. Be sure to register by October 16 for a discount. If anyone needs a roommate, email Janet Will (jbwill2@bellsouth.net). She will link up any who contact her.

GCMTA Fall Festival

The Fall festival is fast approaching. Please make sure you get your paperwork delivered to Marion Compton's home by **October 9**.

The details and forms are in the new Yearbook. Forms are also available on our website: <http://www.gcmta.org>.

There are a few changes this year:

1. The entry fee is unchanged, at \$20. Each additional instrument is \$10.
2. Vocal entries up to grade 9 may perform both pieces in English. Grades 10-12 must perform an art song in a foreign language.
3. Guitarists may choose from Classical or Acoustic repertoire and, as with pianists, and vocalists, must perform from memory.
4. Other instruments: memorization is optional.
5. Location: Duluth First Baptist Church, 2908 Duluth Highway (Highway 120).

Teachers: write one check to cover all fees, payable to: GCMTA. Remember to include a self-addressed, stamped, business size envelope for return of your schedule. Use two stamps if your Master List is 2+ pages. Completed forms and fees should be delivered directly, or mailed, to:

Marion Compton, 1401 Laurel Haven Court, Lawrenceville, GA 30043.



Musikgarten Workshop



Teaching Music. Understanding Children

On October 17th, Dr. Mary Louise Wilson is presenting a 4-hour workshop designed for piano teachers, sponsored by Musikgarten. Here is a description:

Reinvigorate your Piano Studio!

Join us for 4 hours of theory games and lesson planning strategies designed for fun and success!

• Learn new ways to engage your students in theory games. Ideal for your group theory classes, these games are a great way to invigorate your theory lessons, keeping them fun and relevant – and building the rhythmic and reading skills the students need.

• Start your young beginners on a road to success with a 5-week program which will delight them AND prepare them for success. Singing and moving tune the ear and refine the body, laying the foundation for success in learning to play the piano. The lesson plans fully explain all the singing and movement activities, as well as the keyboard activities which are layered on at an appropriate time and pace.

For specific location, scheduling, and cost information please call the Musikgarten office at 1-800-216-6864.

Musikgarten is a great way to prepare your future piano students. By laying the music foundation when the children are young, students flourish when they get to the piano.

Teaching has never been more enjoyable!

Placement News

A new up-to-date list of 225 Gwinnett County schools, both public and private, has been completed and a letter by mail or email has been sent to music specialists at each school. Included was information for them to contact me if they have students seeking private music instruction.

After receiving my letter, Richard Shivers then sent the information to all music specialists in Gwinnett County by email.

In September I received an email from Megan Alexander, music specialist at Mulberry Elementary, looking for a piano teacher in the 30019 zip code area for one of her students. I sent her three teachers' names-Kathryn Dawal, Debra Murphy, and Julie Kirksey.

Also in September I sent out an email to all GCMTA members regarding a position opening at Country Brook Montessori School in Norcross. This was a 1 day a week, group class for 3-8 year olds.

I also sent to all members a request from Associated Royal Board of the Royal School of Music in Suwanee, a need for a teacher to teach 9 students, two days per week, preparing them for the ABRSM exams.

Another request came from Rebecca Dumas, who then found Julia Distelhurst to teach her son piano.

I have added the following names to the list of teachers wanting more students:

Julia Distelhurst, Debbie Murphy, Serene Lee, Pam Asberry,

Natalie Hardy, Deb Hughes, Junghee Lee, Janet Will, Terri Schroader, Debra Brady, Mary Mattern, Lisa Gaal, Jenny McCormick, Amy Wilson, Rosely Piraino, Stephanie Freeman, Nannette Stanke, Mary Dekkers, Junghee Chung

If I have omitted any names or there are additional names to be added, please email me at tealj@charter.net

Teal Justice

Placement Chairman



2010 Atlantic Music Festival

The 2010 Atlantic Music Festival announces its call for entries for Fellowship Program applicants. Submission forms can be completed directly online at the official Atlantic Music Festival website: <http://www.atlanticmusicfestival.org/the-institute>

AMF provides complete financial coverage for tuition and housing during the four weeks of residency. The Fellowship Program is open to orchestral instrumentalists, guitarists, pianists, opera singers, one composer, one conductor,

and one recording engineer between the ages of 18 and 34. Accepted applicants will be featured as resident artists at The 2010 Atlantic Music Festival.

Deadline to submit for the U.S. and International applicants for the 2010 Atlantic Music Festival is January 4, 2010.

The submission form and complete information regarding eligibility and entry rules for the 2010 Atlantic Music Festival are

available on the Atlantic Music Festival website. Information is also available through the Atlantic Festival by email to community@atlanticmusicfestival.org, or by regular mail to Little Feather Works, 228 Park Ave S #31975, New York, NY 10003.

"This will be our reply to violence: to make music more intensely, more beautifully, more devotedly than ever before."

-Leonard Bernstein

Piano Pedagogy Symposium



You are invited to attend an exciting event for pianists and piano pedagogues, to be held on the UGA Campus on **Feb 20th, 2010**.

This Piano Pedagogy Symposium will feature nationally-renowned scholars Robert Duke (author of *Intelligent Music Teaching*) and Martha Hilley (author of *Piano for the Developing Musician*) from the University of Texas at Austin. They are planning informative and engaging sessions that you won't want to miss. A similar symposium in 2008 attracted 120 teachers from six southeastern states. Once again, the Piano Department at the

Hugh Hodgson School of Music is pleased to sponsor this symposium and provide it to you free of charge. We look forward to seeing you and your colleagues at this special event.

You will receive more information later this fall with a detailed schedule and information about an optional on-site lunch. In the meantime, I encourage you to save the date and share this information with interested teachers and students.

Tips from John Gorrie: author, "Performing in the Zone"

Dear music teacher,

If your students have ever felt tense, nervous, or anxious in performing or non-performing situations, they can 'Go Peripheral' to restore a sense of calm, confidence, and control to body and mind, and in less than 30 seconds.

You and your students can try 'Going Peripheral' right now, in your next lesson, or before a performance by following these 4 simple steps. In a standing, or sitting posture:

1. Look straight ahead.
2. Relax the muscles around your eyes – or even close your eyes slightly.
3. Focus on objects or the walls at the extreme left and right of you at the same

time, without moving your eyes.

4. Maintain this attention to your peripheral vision for as long as you feel necessary, but at least 30 seconds...

What effects does 'Going Peripheral' have on you and your students?

You may notice that breathing slows down, and that muscles begin to relax in the rest of the body. This calming effect can be a huge help to your students just before they enter audition rooms or take to the performing stage.

Going Peripheral is fully explained in "Performing in The Zone"

See <http://www.thezonebook.com> for more info.

By showing your students how to "Go Peripheral" before their next performance, you will see exactly how this simple yet powerful technique can help them to perform in The Zone!

Take care, and all the best!

Jon Gorrie

-author, Performing in The Zone

* John Gorrie presented the Keynote Address at the 2009 MNTA conference in Atlanta



Ensemble Information

Please correct this information in your yearbooks!



REGISTRATION AND FEES:

4. Please include in your check the following: \$20.00 per student entered plus \$7.95 if you plan to play the teacher piece and \$7.95 if you would

like a copy of the preview CD (all musical selections recorded at the October meeting) or a total of \$14.90 additional for both the teacher piece AND the preview CD. Please note that this is a reduced price for the preview CD subsidized by the ensemble concert committee; if you do not order at the time of registration, the cost will be \$12. Also include

\$25.00 Teacher Processing Fee; teachers exempt from this fee are:

- A. Teachers whose names are included in the 2009-2010 GCMTA Yearbook or..
- B. Teachers who have joined GCMTA/GMTA/MTNA for the first time this fiscal year.

A Legend is Gone



Did You Know?????????

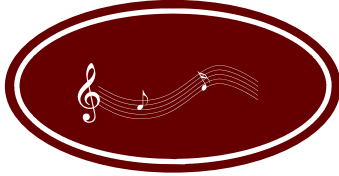
Famed duo artist, Art Ferrante, 88, died Sept. 19 at his home in Longboat Key, FL. He performed for four decades with Louis Teicher, whom he met at Juilliard and who died last year. Some of our members may have attended the Susan Teicher - Martha Thomas concert here last year, hearing some of

her father's most popular tunes. Those of us who grew up in the 50's and 60's most certainly were inspired by listening to their florid, arpeggio-packed versions of movie themes and popular songs, sprinkled with classical showpieces. "The Apartment," "Exodus" and "Midnight Cowboy" were three of their biggest hits. Hold on to your albums! These guys are already missed!

GWINNETT

Gwinnett County Music Teachers
Association

Janet Will, President
jwill2@bellsouth.net



Please visit our website

www.gcmta.org

A few things you will find on the website are: various forms for events, photos, committee members' email addresses, past newsletters, the "Find a Teacher" tool, and many other things. Kathy Dawal and Eric Asberry are working hard to make it both useful and attractive for us and the community.

If you haven't visited yet, take a look!

Newsletter...

If you have information that needs to go in the newsletter, please email it to gcmtamail@gmail.com. Label your email with "newsletter" in the subject line. You can also call me at 678-985-9302. Please send me your information as you want it worded in the newsletter, and have it to me by the 1st of the month. Please try not to do too much formatting on your information (spacing, tabs, etc.) Leave that up to me. Thank you!

Natalie Hardy

Odds & Ends

Yearbook Corrections:

The date for JR/SR Scholarship is
Saturday, March 27, 2010

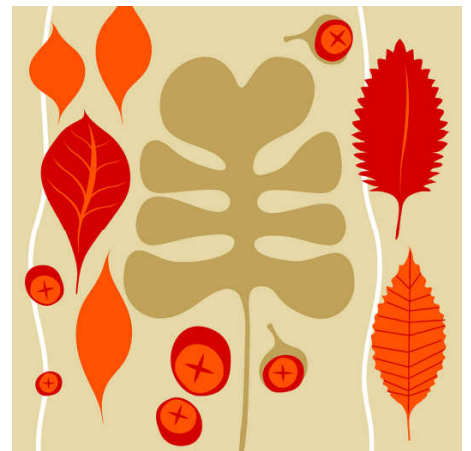
*Please add to your yearbook:
Diana Opolka 3113 Westbrook Tr.
Lawrenceville, GA 30044
ggpc_admiral@bellsouth.net

Many of our members experienced great difficulties with the recent flooding. Among those we know about, we express sympathy to Lois Sivert, whose car was totaled in the high waters.

Robin Whitworth is recovering from a recent heart attack and Carole Mitchell has been experiencing a painful time and also totaled her car. This is a hard time for many of our members who have fewer students than in the past and difficulties in this economic crisis. Let's remember to encourage one another however we can!

WANTED: *Harpsichord*

GCMTA would love to have a Harpsichord event this year, but committee members are having a hard time finding an instrument and location to use. If you know of a place that has a harpsichord we could use, please contact Lois Simon: LoisSimon@aol.com or Yumi Patterson: YumiSan2K@bellsouth.net



GMTA STATE CONFERENCE

Registration Form
Shorter College, Rome, Georgia
November 5-7, 2009

Pre-Registration Postmark Deadline Date: October 16, 2009

Name _____ Local Association or College Affiliation _____

Street Address _____ City, State, Zip _____

Email Address _____

Do you hold GMTA/MTNA Certification? Yes _____ No _____ Type _____

Are you a new GMTA member? Yes _____ No _____

Is this your first GMTA conference? Yes _____ No _____

Current GMTA or Local Association Position Held _____

(Indicate if you are a former President of GMTA)

Registration Fee:

\$80.00 GMTA member _____

\$85.00 Non-member fee _____

\$103.00 Husband/Wife (both must be GMTA members) _____

\$107.00 Member/Non-Member Spouse _____

FREE GMTA Student Members _____

\$15.00 Non-member Student fee _____

NOTE

There will be an extra \$5.00 charged for all registrations postmarked after October 16th. The above prices include admission to all conference activities, including Friday night's program. Pre-college students may attend conference student recitals and student master classes with their teacher, provided that the teacher is a GMTA member and registered conference attendee. Free conference registration is offered to host college faculty and students who are members of GMTA. The above prices do NOT include any Meal Functions. All fees (registration and meals) are non-refundable.

MEALS SOLD THROUGH PRE-REGISTRATION ONLY

\$10.00 Friday: Box Lunch (*Sandwiches, pasta salad, pound cake, drink*) _____

\$20.00 Friday: Evening Banquet _____

(Prime Rib, Tossed Salad, Twice-Baked Potato, Green Beans, Hot Fudge Sundae Pie)

MAKE CHECKS PAYABLE TO: GMTA
MAIL THIS FORM (OR A COPY OF IT) WITH YOUR CHECK TO:

GMTA
Donna Trivette, Executive Director
956 Green Knoll Drive
Dacula, GA 30019

Total Amount Enclosed \$ _____

Reminder: Postmark Deadline Date is October 16, 2009