

# GCMTA News

Gwinnett County Music Teachers Association

## From Our New President: Janet Will

A sincere **welcome** to all new, former and prospective members of Gwinnett County Music Teachers Association! It's an honor and a pleasure to serve as your President for the next two years. When I think of all those who've gone before me, establishing and building up this great local organization, I am deeply humbled. I do promise to work hard to uphold the high standards that have been set. In turn, I'm counting on our membership to challenge, exhort and work with me and one another in an atmosphere of openness, hospitality and artistic excellence. GCMTA has a heritage to live up to and a legacy to strive to pass on. "Let us never grow weary in doing good," not only for the sake of our students and our community, but also for one another. Together, we can make this another great year!

Let's make **hospitality** a priority this year! Those of us who have been around for a while know who the new and prospective members and visitors are. Instead of sitting with just our longtime friends at meetings or only greeting those we've always worked with, let's make a special point to reach

out to new people and invite them to join us. Making an effort to help a new teacher "learn the ropes" when it comes to event requirements and deadlines could make the difference in whether a newcomer buys in to our group or leaves in bewilderment. Our membership chair cannot do the job of new member assimilation alone. It will take all of us to be friendly and helpful. If we want our numbers to continue to grow, we must be inviting and then be willing to nurture those who come.

The names of **winners** at the Spring Auditions were listed in the Summer 2009 edition of the state GMTA newsletter. To read that newsletter, you will need to go to [www.georgiamta.org](http://www.georgiamta.org). For sign in, the name is "georgia" and the password is "music." The newsletter is very long, but you can click on only the pages you want to read.



## Executive Board Meeting

We will meet on **Wednesday, August 26, from 10 – 12** at Janet Will's home (408 William Ivey Rd., Lilburn, 30047) to share progress and plans for 2009-10. Executive Board members please plan to attend. We need everyone's input and participation. Some of you cannot attend our regular meetings but may be able to come to this initial planning session. I highly encourage you to make every effort to be with us. See you there!

August 2009

Vol. 2009, Issue 5

### Inside this Issue:

Event Schedule	2
Newsletter Info	2
Programs	2
Thank You	3
New Officers	3
Website	4
Odds & Ends	4

### Come to our meetings!

- Meetings are on the 4th Wednesday of each month
- They are at Lawrenceville Church of God unless otherwise noted
- They begin at 9:30am and end at 11:30am
- See Page 2 for the Program Schedule

## 2009-2010 GCMTA Schedule of Events

Here are the dates of GCMTA activities. Registration deadlines and further information will be available in the yearbook.

- November 5 – 7** GMTA State Conference, Shorter College, Rome, Ga
- November 14** GCMTA Fall Festival
- February 13** North Gwinnett Federated Festival
- February 13** West Gwinnett Federated Festival
- February 20** Central Gwinnett Federated Festival
- March 6** GCMTA Local Auditions



- March 27** Jr/Sr Scholarship Auditions
- March 20, March 27, April 17** Ensemble Rehearsals
- March 20 – 24** MTNA National Conference in Albuquerque
- April 24** Ensemble Concert

## 2009-2010 Program Schedule

- September 23, 2009**
  - Dr. Douglas Weeks - Chopin Preludes program
- October 28, 2009**
  - Ensemble Concert music preview - at Piano Works
- November 18, 2009** - Debbie Brady & Linda Walker - Composing & Getting Published
- No December meeting**
- January 27, 2010** - Brunch meeting—location TBA
- February 24, 2010**
  - Dr. Priscilla Jefcoat - Memorization techniques
- March 24, 2010**
  - Master Class with Dr. David Watkins
- April Meeting**
  - Executive Board meeting with Janet Will
- May 19, 2010**
  - May luncheon meeting - location TBA

## Newsletter

If you have information that needs to go in the newsletter, please email it to me at [gcmtamail@gmail.com](mailto:gcmtamail@gmail.com) or call me at 678-985-9302. Please send me your information as you want it to appear in the newsletter and have it to me by the first of the month. Please label your emails "Newsletter" in the subject line.

Thank you! -Natalie Hardy



## Our First Meeting

Please join us at the September 23 meeting to hear Dr. Douglas Weeks' wonderful program about the Chopin Preludes. Dr. Weeks, a Steinway artist, is the Babcock Professor of Piano at Converse College in Spartanburg, SC, and Chair of Piano Studies at the Brevard Music Festival in Brevard, NC, in the summer. Dr. Weeks has many numerous accomplishments, one of them being a contestant in the VI International Tchaikovsky Competition in Moscow! He also has the privilege of being Tina Darden's former teacher. Doug Weeks is a lively and welcome addition to our great roster of speakers for GCMTA, and you will enjoy his presentation.

## GCMTA Officers 2009-2010

### Officers

President - Janet Will

President-Elect/Programs - Cathy Thacker

Secretary - Tina Darden

Treasurer - Nora Martin

### Committees

Advisor - Lois Simon

Certification - Robin Engleman

Ensemble Piano Concert - Pam Asberry,  
Nora Martin, Linda Walker

Federated Festivals:

North - Judy Harper (chair)

Central - Mary Ann McTier,  
Harriet Woodward

West - Debra Hughes

GCMTA Festival - Marion Compton,  
Kathy Dawal

GMTA Auditions - Jean Mann,  
JaniceWong, InSun Baik

GMTA Theory - Robin Whitworth,  
Lois Sivert, Linda Walker

Hospitality - Rebecca McKeown,  
Eunju Park,

Mary Marshall Dekkers (name tags)

Publicity/Website - Kathy Dawal

Jr. Sr. Scholarship Audition -  
Yumi Patterson

Membership - Bonnie Bowen

MTNA Foundation/GMTA Awards -  
Susan Andrews

Newsletter – Design, Edit - Natalie Hardy

Printing, Mailing - Jenny McCormick

Placement - Teal Justice

Yearbook - Lisa Gaal



## THANK YOU! THANK YOU!

**Patti Bennett,**  
for providing a wonderful display of teaching tools and games for our May luncheon meeting. The presentation was so practical and informative!!!

**Yumi Patterson,**  
for hosting our members and teaching a most inspiring and useful seminar on Burgmuller on June 19. What a gift to our group!!!

*"Teachers open the door. You enter by yourself"*

*- Chinese Proverb*

**Make a Note** 🎵

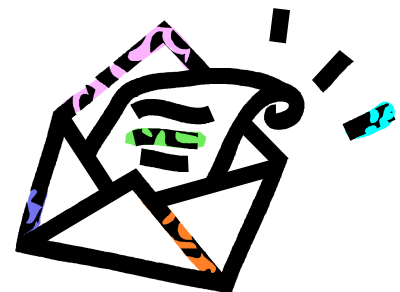
**Mary Lee Pennington** has a new address.

1431 King George Boulevard

Apartment 20 C

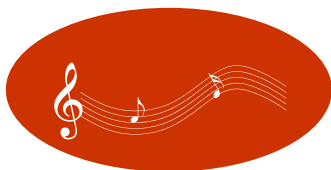
Savannah, GA 31419

mlee032328@yahoo.com



---

## GCMTA News



Gwinnett County Music  
Teachers Association

Janet Will, President  
jwill2@bellsouth.net

Please visit our website

[www.gcmta.org](http://www.gcmta.org)

**A few things you will find on the website are: various forms for events, photos, committee members' email addresses, past newsletters, the "Find a Teacher" tool, and many other things. Kathy Dawal and Eric Asberry are working hard to make it both useful and attractive for us and the community.**

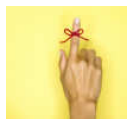
**If you haven't visited yet, take a look!**

---

## Odds and Ends

### Concerns:

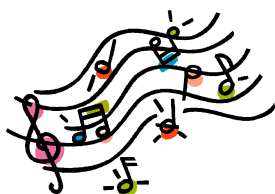
- Nanette Stariha's husband passed away in May.
- Jean Mann's husband, Jim, is gravely ill with pneumonia at Gwinnett Medical Center.
- Please keep these members and their families in your thoughts and prayers



**Don't forget:** NFMC Jr./Sr. Dues must be turned in by the first meeting: September 23. Forms can be printed from the website.

### Luxomni Baptist Church needs a pianist

**You may contact Rev. Glenn Mann at 770-925-2195**



#### Just Opened: New Studio in Suwanee

Valencia C. Giles Music Studio is located in the Woodland Park Retail Center, 2001 Lawrenceville-Suwanee Rd. 30024 Suite 201. The phone number is 678-376-9800. I am now looking to hire piano teachers for students ages 4 and up. We offer private lessons as well as group lessons. For more information please call 678-376-9800 and ask for Mrs. Giles, or email your resume to [vcgmusicstudio@yahoo.com](mailto:vcgmusicstudio@yahoo.com). Special note: We also are in need of flute instructors, voice teachers, guitar instructors. I am willing to interview musicians who have interest in having studio time for their instrument of choice.